



Crystal Necklace

You will need:

30 x Links of 3x4mm Chain
7 Headpins
1 Top Drilled Crystal Drop
4 x 5mm Faceted Crystal
12 x Swarovski 4mm Bicones
1 7mm Triangle Jump Ring

5 x 8mm Glass Cubes
60 x Sz 6 Clear Seed Beads
Silver Seed Beads
White 4mm Bugle Beads
1m White Tigertail
Crimp Beads / Clasp & Ring



1. Take a piece of chain 9 links long and add the loop of a head pin to the centre link.



2. Onto the pin add a selection of seed & bugle beads, a Swarovski Crystal and a Glass Cube. Form the end of the wire into a neat loop and trim off the excess.



3. Add a second eye pin to the next link in the chain, making sure the chain lays straight and not twisted.
4. Add another selection of beads including a 5mm Crystal and 2 Swarovski's, Make sure this pin is slightly shorter than the centre one. Repeat this pin on the opposite side of the first one.



5. Add another pin to the next link, bead it up with Seeds and Swarovski's as before, again making sure it is slightly shorter than the previous pin. Make a matching one on the other side.
6. Repeat this until you have 7 pins in a row, forming a 'V' shape from the centre.



7. Take the 21 link of remaining chain, and attach the centre link to the bottom of the centre pin.
8. Making sure the chain lays straight throughout, link the remaining pins to the chain.



9. Connect the ends of the top piece of chain to the second link of the long piece, as show in the pic.



10. Using the triangle jump ring, clamp the top drilled crystal drop and attach it to the middle chain. This is the centrepiece complete.



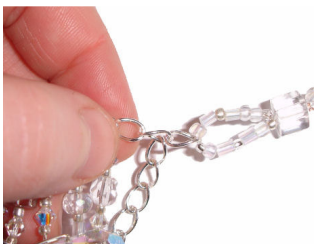
11. Take a 1/5m length of white tigertail and bend it in half without kinking it. String approx 3cm of mixed seeds into the centre and thread both ends through a cube bead. Crimp into place by squashing a crimp bead close to the cube.



12. Separate the wires and string 5 cm of mixed seeds onto both strings, bring them together with a cube bead as before and crimp into place.



13. Thread 25 – 30 Sz 6 Clear Seed beads onto both wires, followed by a crimp bead, then a clasp – push the wires back through the crimp bead and a few seed beads and squash the crimp. Cut off the excess wire.



14. Open up the last link on the centre piece and attach it to the loop on the beaded wire.
15. Repeat from Step 11 for the other side, using the split ring instead of the clasp.

